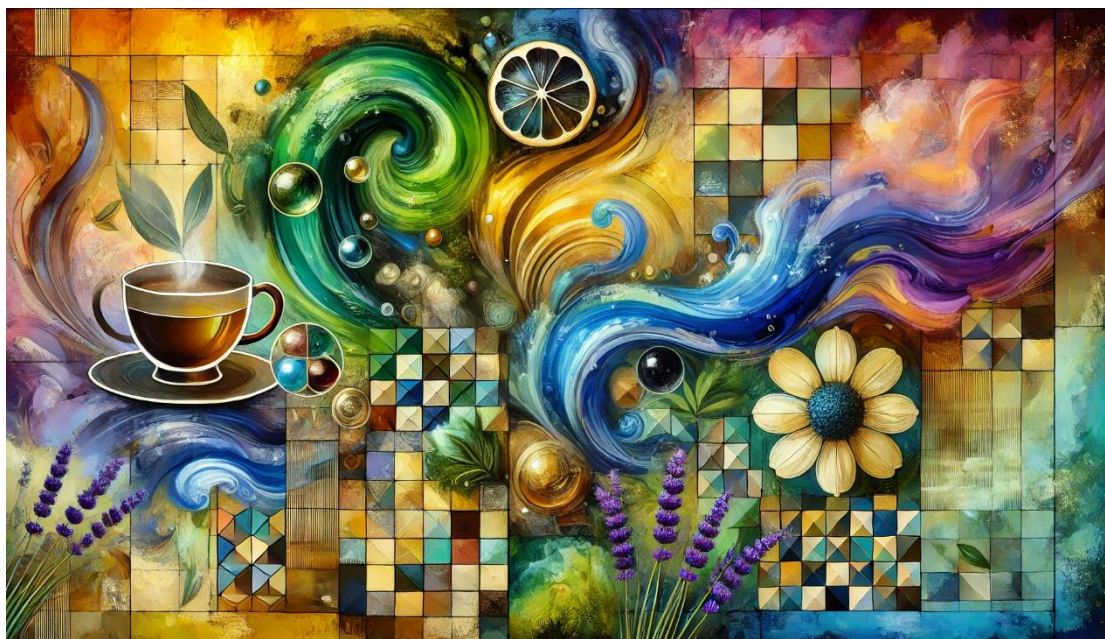


Last updated on February 19, 2025! If we add more twists, turns, or surprises later, don't worry—we'll attach the updates like little treasures waiting to be discovered!

PART 3: From Leaves to Legacy: A Hands-On Framework for Change

Imagine a child, inspired by the delicate aroma of Huangshan Maofeng and Provence's lavender, holding a single leaf with a world of dreams in their hands. PART 3 transforms these dreams into reality—a system where simple leaves inspire profound change, bridging imagination and legacy.



Introduction for PART 3: Unique Solution Overview

As we've explored, children's creativity holds immeasurable potential—not just to inspire but to create tangible impact. However, unlocking this potential requires more than imagination; it demands a system. A framework that transforms raw creativity into tools for connection, empowerment, and global change. At this point, we introduce our unique solution—a structured yet flexible formula that combines cultural heritage, actionable systems, and measurable outcomes to create a world of opportunity for children and communities alike.

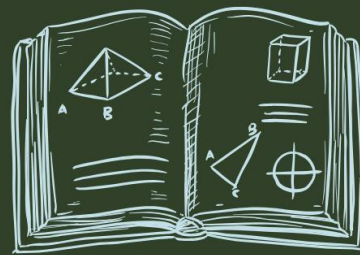
In the next section, we'll walk you through this framework step-by-step, breaking it down into its core components and illustrating its impact with real-world examples. Let's see how creativity, collaboration, and structure come together to make a lasting difference.



Imagine a world where a 4-year-old's painting not only sparks creativity but also changes lives—providing \$1 a day to a family of tea farmers in Provence, turning imagination into global impact.



At the Matrix Kids Cards Museum, we believe that children's creativity is more than just art—it's a tool for transformation. Our unique formula combines the elegance of Huangshan tea gardens with the charm of Provence lavender fields, empowering children to create art that bridges cultures and impacts lives. Through our 6-month program, children don't just make art—they create IP that supports families worldwide, proving that even the smallest hands can spark global change. By connecting creativity, purpose, and structured systems, we are shaping the next generation of compassionate innovators.



First, we combine the beauty and traditions of Huangshan's tea gardens with Provence's lavender fields to create a shared IP, symbolizing global cultural harmony (TEA). Next, we localize this shared IP through immersive workshops and cultural exhibits in key locations like Montpellier and Tippecanoe (H₂O). Finally, we scale these efforts across 3,300 locations worldwide, replicating the model to ensure equal opportunities for children everywhere (80°C / 176°F). Together, this system empowers kids aged 0-6 to turn creativity into tools for global impact, providing equal IP rights and tangible support for families in need.

Take the tender leaves of Huangshan's Mao Feng tea, add the pure waters of shared creativity, and nurture them at the perfect temperature—80°C. What you create is not just a cup of tea but a moment of harmony, connection, and purpose. This is the art of leaves turning into impact, steeped in care, brewed with intention, and shared across the world.



[1: TEA] Huangshan + Provence (Shared IP) + [2: H₂O] Localization in Montpellier & Tippecanoe (Workshops + Exhibits) + [3: 80°C / 176°F] Replication Across Locations (3,300 Counties) = Equal IP Rights for Kids Aged 0-6, Sparking Global Impact Through Creativity.



Now that we've explored the core formula—**TEA + H₂O + 80°C = A Cup of Great Green Tea**—let's dive deeper into its practical application. Each part of this formula aligns with a key pillar of our framework, providing a clear path for turning creativity into global impact.

In the following modules, we'll explore these elements in detail:

MODULE 1: TEA

Exploring the Molecular Foundations, Shared IP, and Creative Pathways for Child-Friendly Innovation

(The foundational ingredient of the formula—symbolizing creativity and harmony, inspired by Huangshan and Provence.)

MODULE 2: H₂O

Bridging Global Creativity and Local Identity Through Immersive Exhibits and Cultural Programs

(The essential connector of the formula—representing localization and collaboration, exemplified by Montpellier and Tippecanoe.)

MODULE 3: 85°C / 185°F

Sustainability, Creativity, and the Creation of Leaf Cards for Tangible Impact

(The perfect temperature of the formula—representing nurturing, transformation, and the time needed to create meaningful impact through sustainability and innovative solutions like Leaf Cards.)

MODULE 4: The Cup of Fragrant Green Tea

Applying Lessons to Transform Communities Locally and Globally

(The final result of the formula—a harmonious blend of creativity, purpose, and structured systems that drive global change and provide equal opportunities for children.)

Finally, we'll conclude with a Showcase Study—a complete case study demonstrating how these elements come together to celebrate participant achievements and inspire global change.



A Sweet Little Reminder Before We Begin the Modules 🍵

Congratulations on making it this far! You've journeyed through the fragrant fields of Provence and the lush tea gardens of Huangshan. Now, it's time to dig deeper into the four magical modules that will transform your dreams into actionable brilliance. 🌿 ✨

But here's the fun part: this isn't just any journey—it's a preparation for greatness! Think of these modules as your treasure map. Follow them carefully, add your own creativity, and you'll unlock the ultimate prize (yes, we mean it, a *grand prize*) awaiting at the end! 🏆

Oh, did we mention it's an *open-book exam*? So don't stress—just bring your best ideas, a pinch of curiosity, and a generous helping of laughter. We promise, even if you trip on a tea leaf, you'll land in a lavender field. 😊 🌸

Get ready, because Module 1 is steeped and ready to brew. Let's begin!