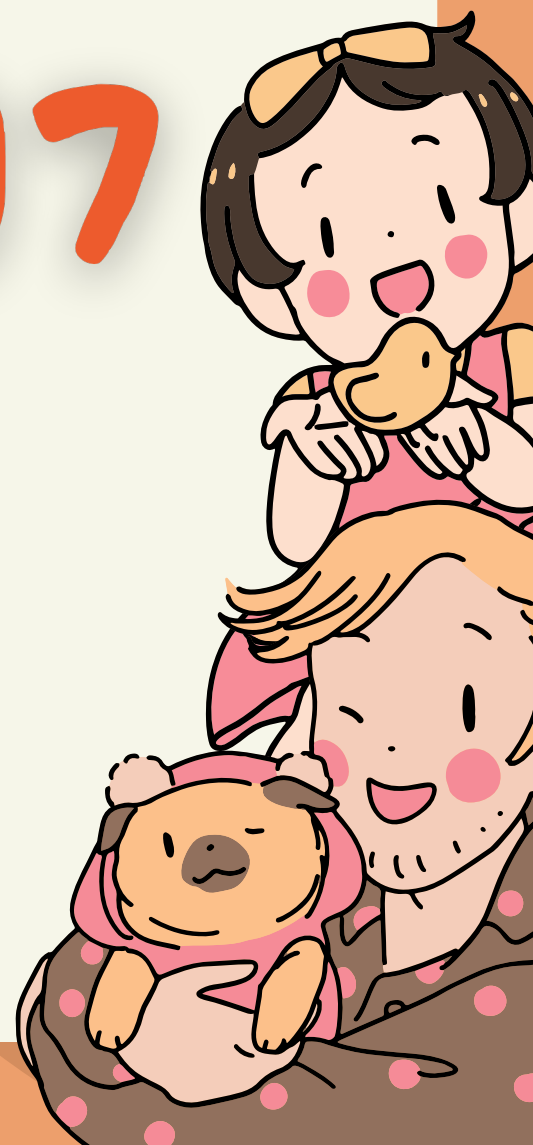


We're now organizing HUNTER's CARDSET using the letters M.A.T.R.I.X. Each letter has four rows—M1, M2, M3, M4—and each row contains seven sub-cards, labeled M1.001, M1.002, M1.003, and so on up to M1.007. This card arrangement is inspired by Niklas Luhmann's note-taking method, and we encourage you to create your own cards in each row. Download the 7 cards from the link below, and let's build them together!

R3.007



## R3.007: "A Sustainable Future"

1. **M (Who to Help):** 🌟 Administrators and policymakers focused on long-term educational goals that will make future generations smile!
2. **R (Whom to Help):** 🎉 Schools, communities, and families in both urban and rural environments who want to make a difference together!
3. **A (Help Objective):** ❤️ Develop a sustainable, adaptable educational tool that can grow with children, just like a lovely plant reaching for the sun!
4. **I (Imagination/Result):** ✨ Imagine a self-sustaining educational framework built around HUNTER cards, adaptable to different subjects and age groups, creating a garden of knowledge for every child to explore!
5. **T (How to Help - The Plan):** 🎉 Implement recycling programs where used HUNTER cards are passed from older students to younger ones, spreading joy while being eco-friendly—talk about a win-win!
6. **X (Details - Actions):** 📝 Partner with local businesses in Tippecanoe to sponsor recycling and reuse programs for HUNTER cards, promoting sustainability as part of the educational journey.

## Application Example in Tippecanoe:

- **Objective:** Position the product as a sustainable, long-term educational solution that shines like a star in the night sky!
- **Expansion with Long-Term Community Ties:**
  - a. 🌈 **Partner with Local Schools for Ongoing Programs:** Create a yearly partnership with Tippecanoe Elementary (111 Learning Ln, Lafayette, IN 47905) and Early Learners Academy (222 Learning Ave, West Lafayette, IN 47906) to ensure continuous product use in classrooms, making learning a cherished tradition!
  - b. ☀️ **Sustainability with Local Retailers:** Collaborate with Smart Start Supply Co. (890 Learning Blvd, Lafayette, IN 47905) and other eco-friendly stores to promote the sustainability aspect of your product, focusing on reusability and educational longevity—because every little bit helps!
  - c. 🎉 **Build Long-Term Community Networks:** Develop alliances with local educational nonprofits and initiatives like Tippecanoe for Learning (456 Help St, Lafayette, IN 47905), ensuring the product stays relevant and supported, like a warm hug for education!

LOVE